

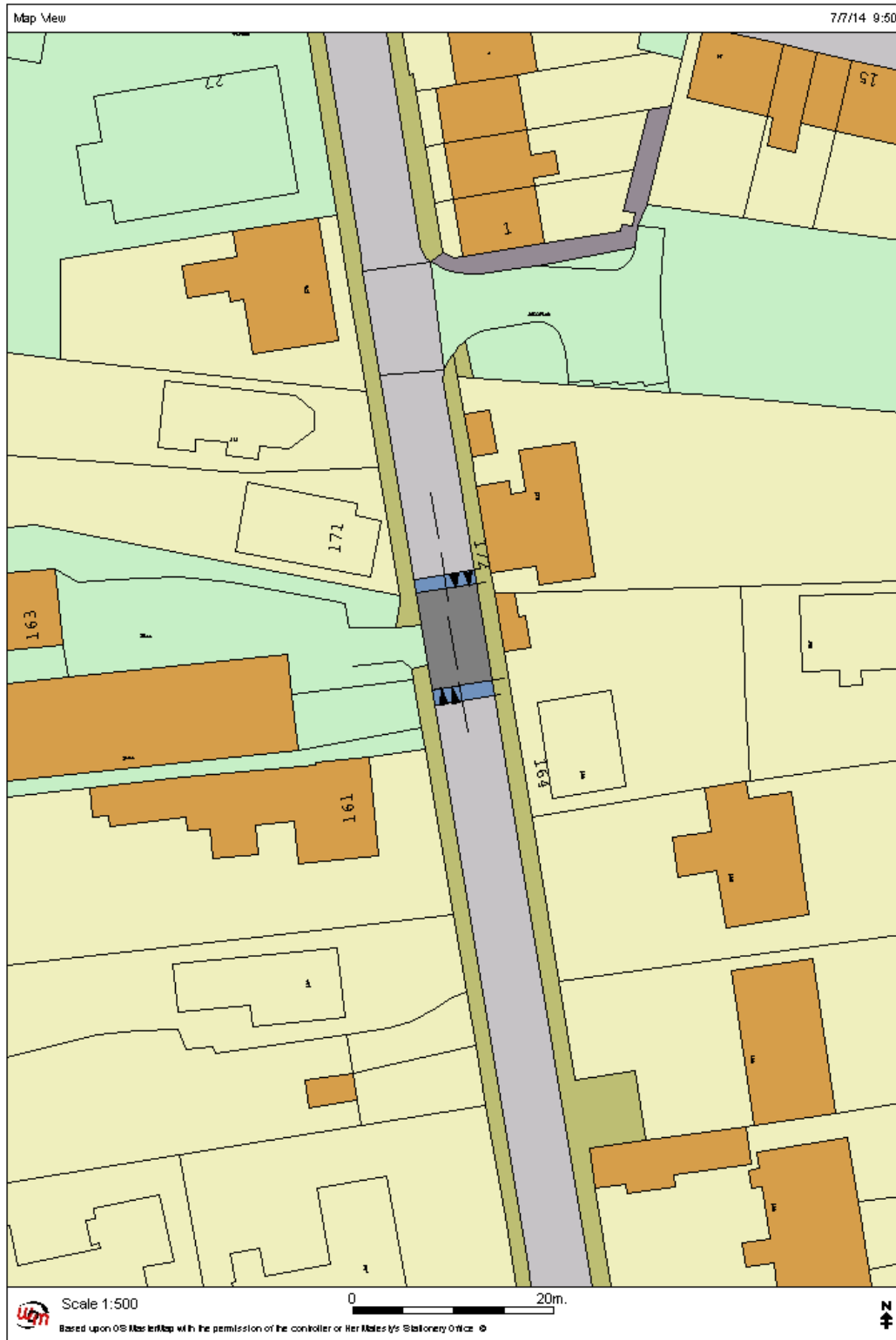
**ROAD SAFETY, TRAFFIC MANAGEMENT AND CAR PARKING IMPROVEMENTS**

---

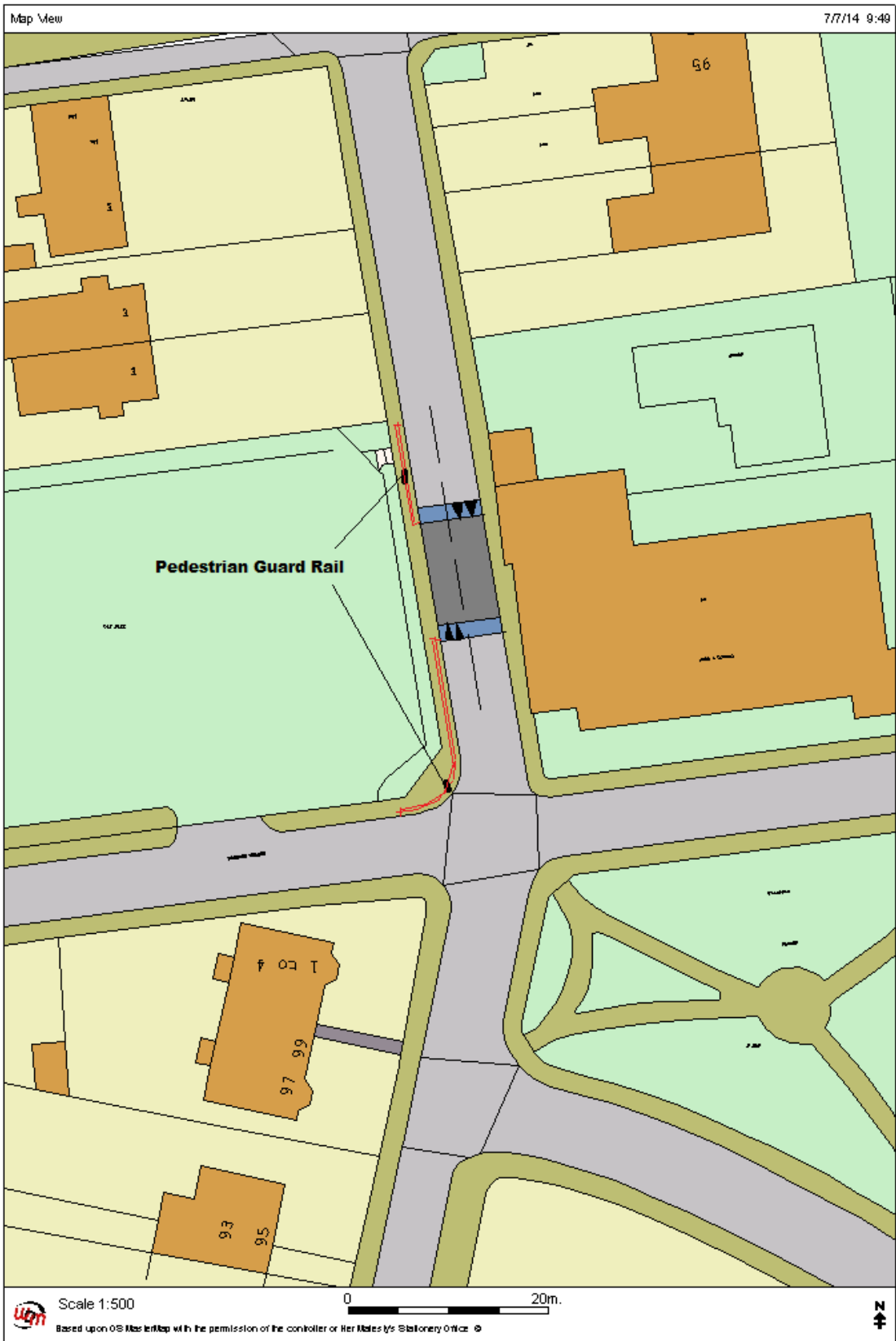
**APPENDICES PACK – Design Details of proposals.**

# Victoria Rd Speed Tables	3 pages
# Jane Villa Carpark amendments	1 page
# Glen Morag and Hanover St parking adjustments	2 pages
# Sandbank and Port Riddel crossing points	2 pages
# Victoria Rd at Royal Crescent - Parking adjustments	1 page
# Glen Morag – “Twenty’s Plenty” zone	1 page

**VICTORIA ROAD PROPOSED SPEED TABLE AT GUIDE HALL**



# VICTORIA ROAD PROPOSED SPEED TABLE AT HANOVER ST



# VICTORIA ROAD PROPOSED SPEED TABLE AT HILL STREET

Map View

7/7/14 9:52



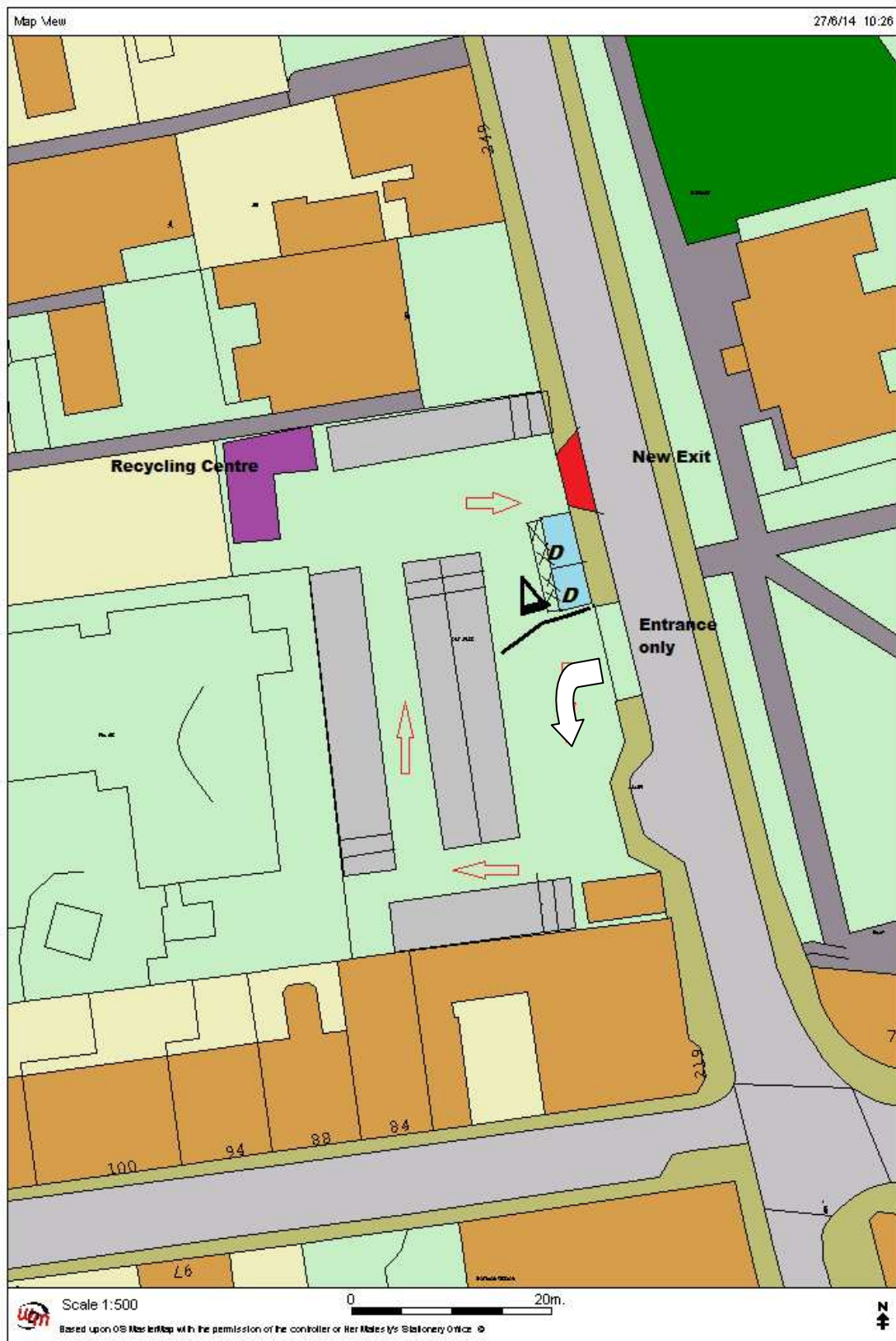
Scale 1:500

0 20m.

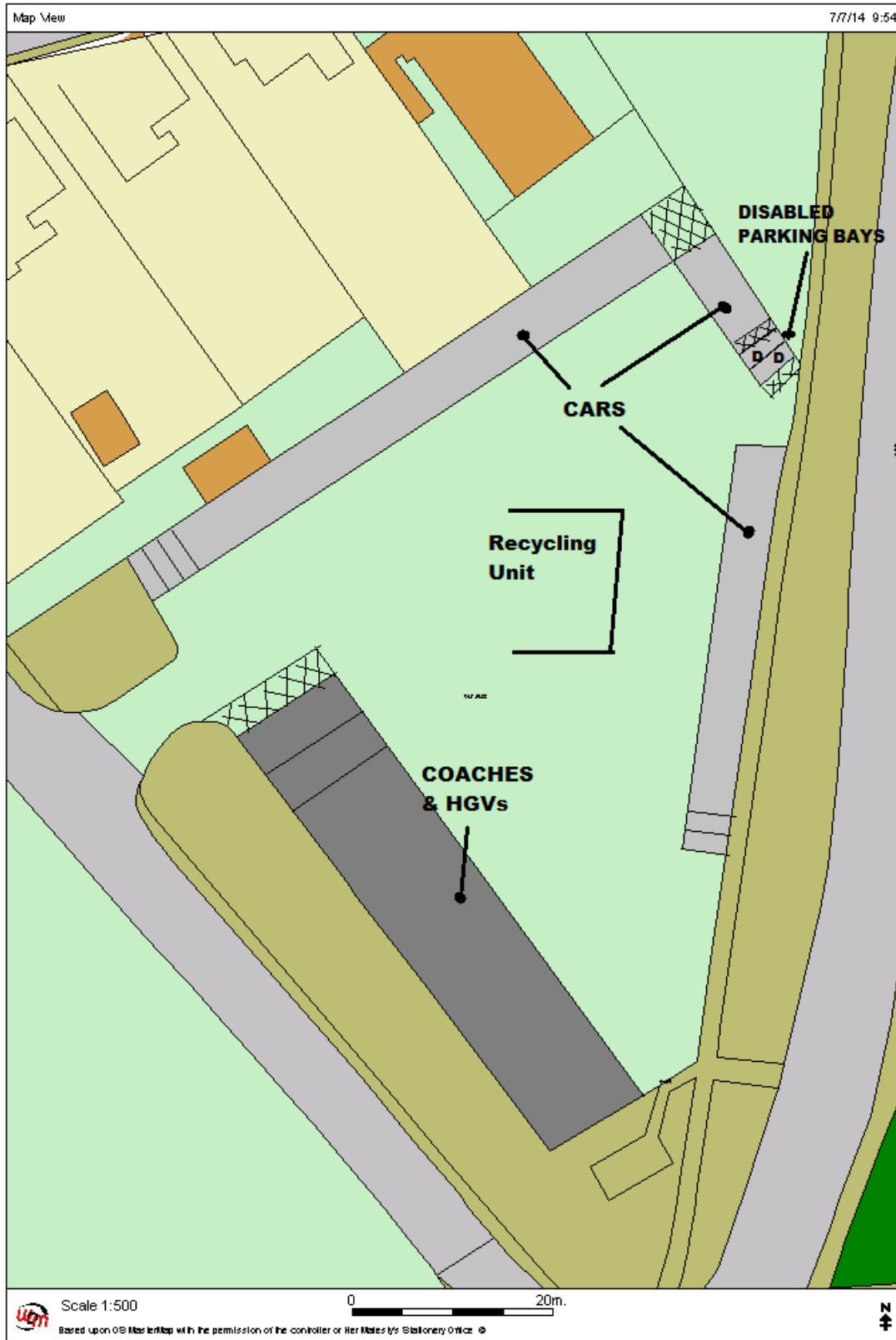
Based upon OS MasterMap with the permission of the controller of Her Majesty's Stationery Office ©



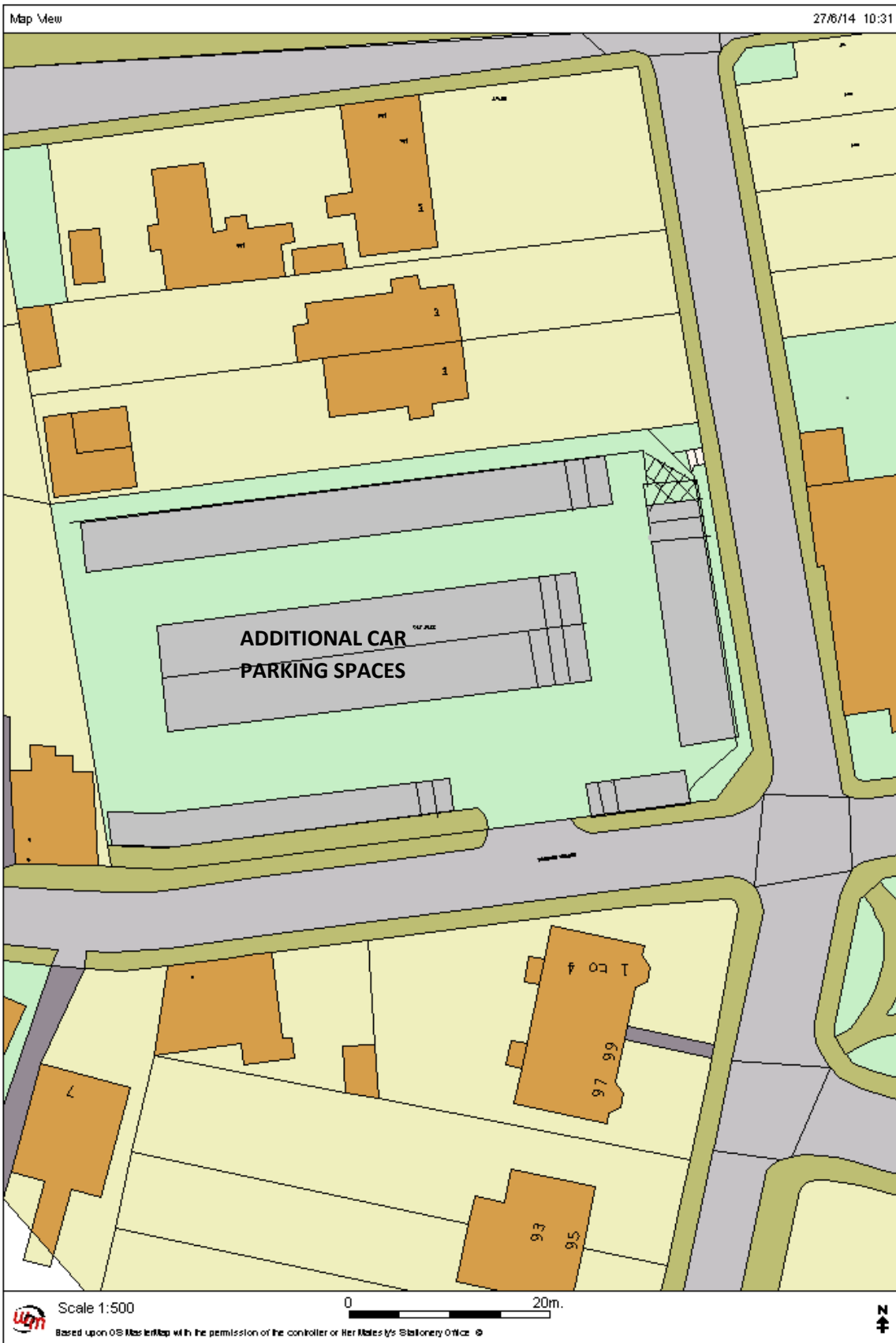
**JANE VILLA CAR PARK PROPOSED LAYOUT AND NEW EXIT**

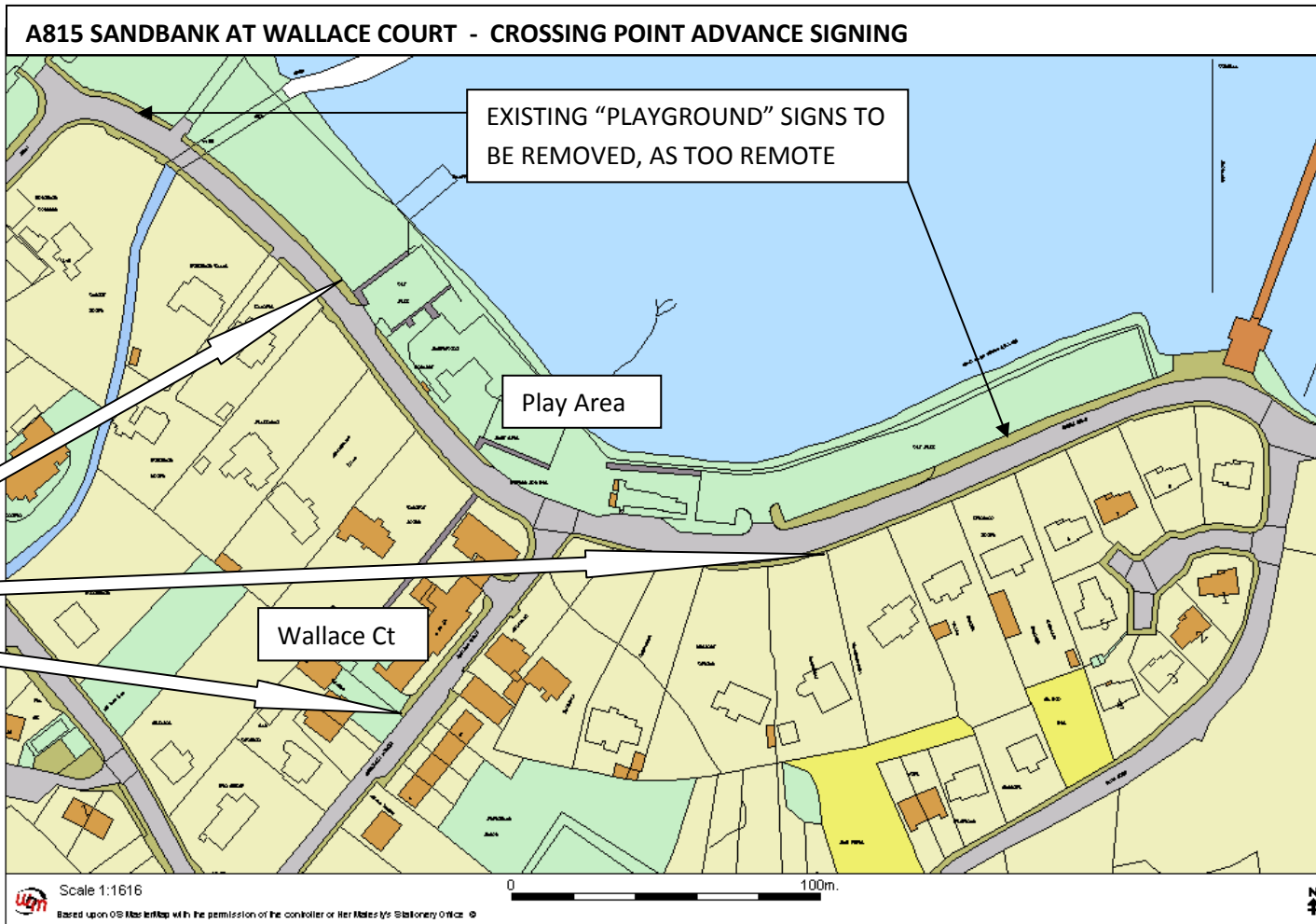


**GLENMORAG CAR PARK REVISED LAYOUT**



# HANOVER STREET CAR PARK PROPOSED LAYOUT



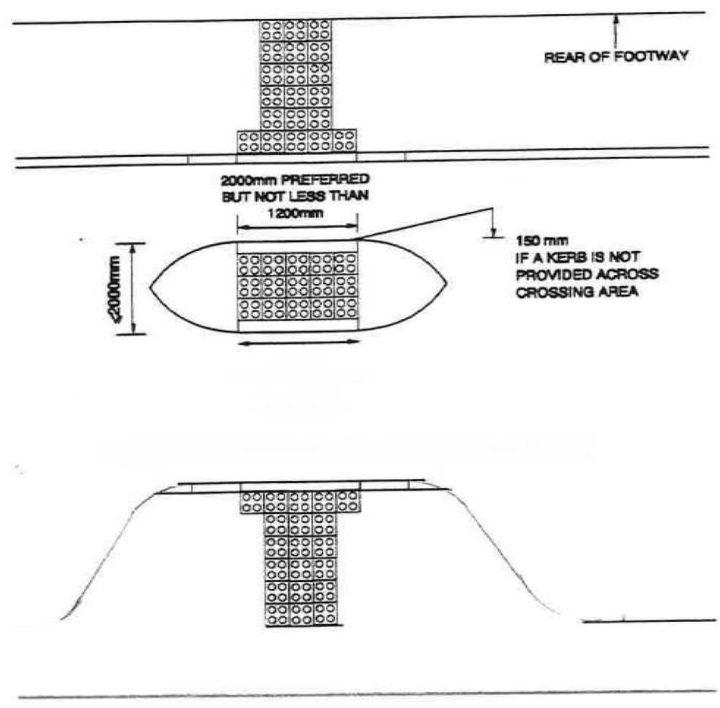
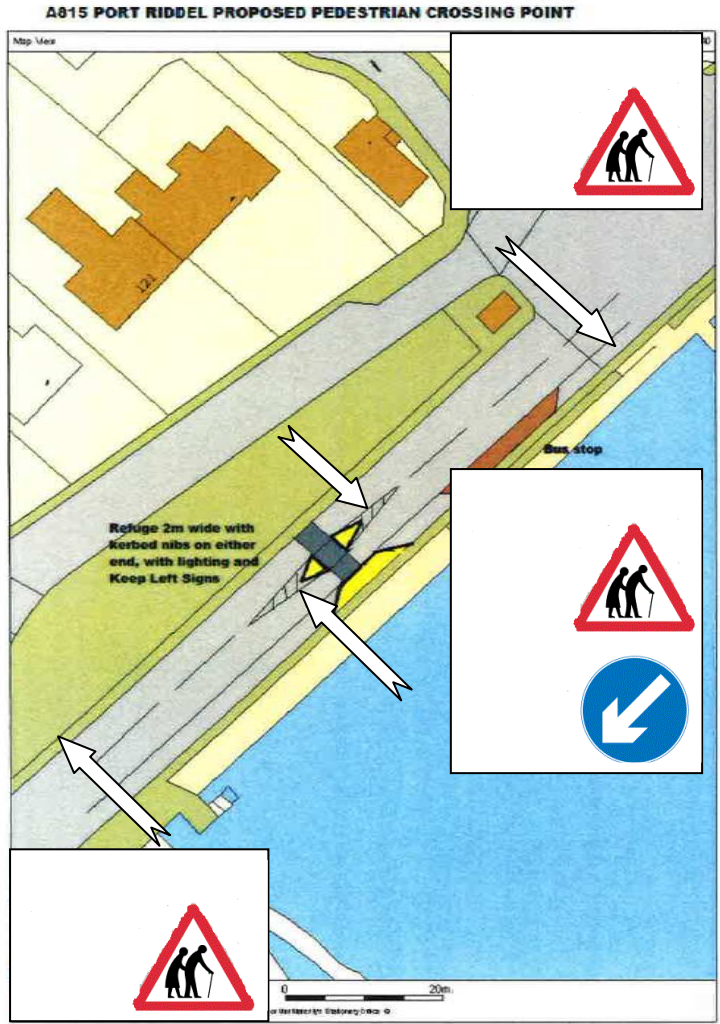


New combined  
**Elderly Person** and  
**Playground**  
crossing signs on  
backing board  
**3 locations**



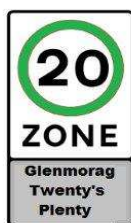
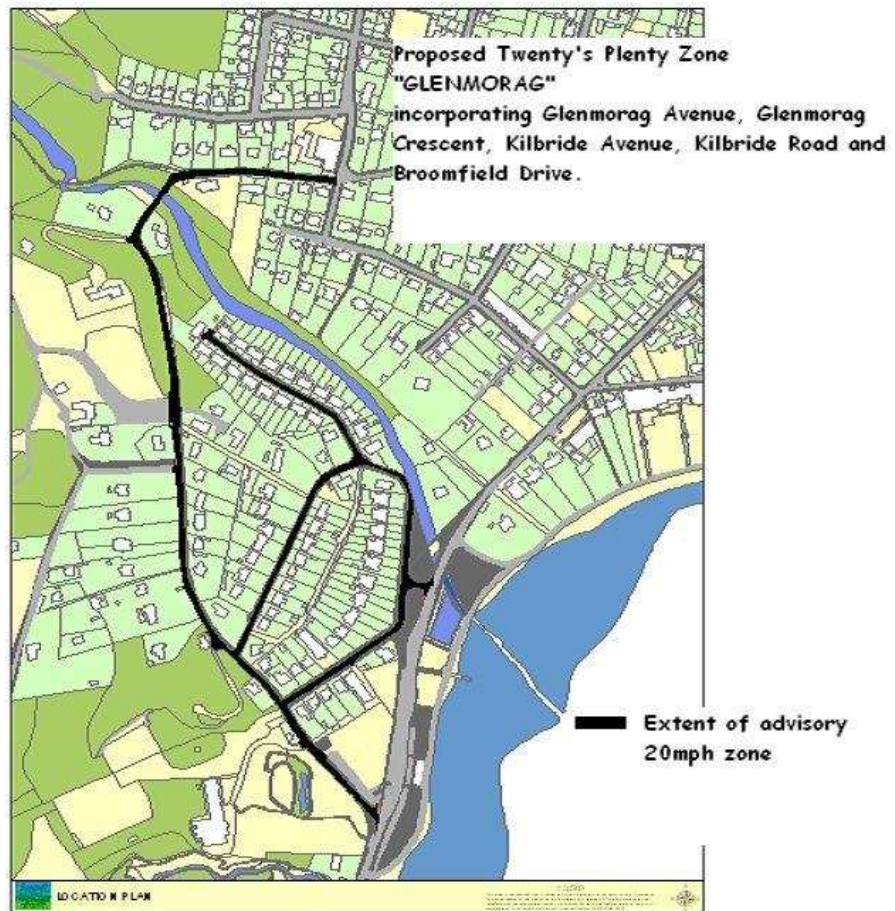


# A815 PORT RIDDEL - CROSSING POINT ADVANCE SIGNING AND CROSSING REFUGE



**VICTORIA ROAD PROPOSED SPEED TABLE AND REVISED PARKING AT HILL ST**





Typical signage for Glenmorag Twenty's Plenty

ADVISORY SPEED SIGNS AND BACK TO BACK END SIGNS TO BE LOCATED AT ACCEES POINTS TO AREA

ROAD MARKING REPEATER ROUNDALS, ON THE CARRIAGEWAY THROUGHOUT NETWORK.